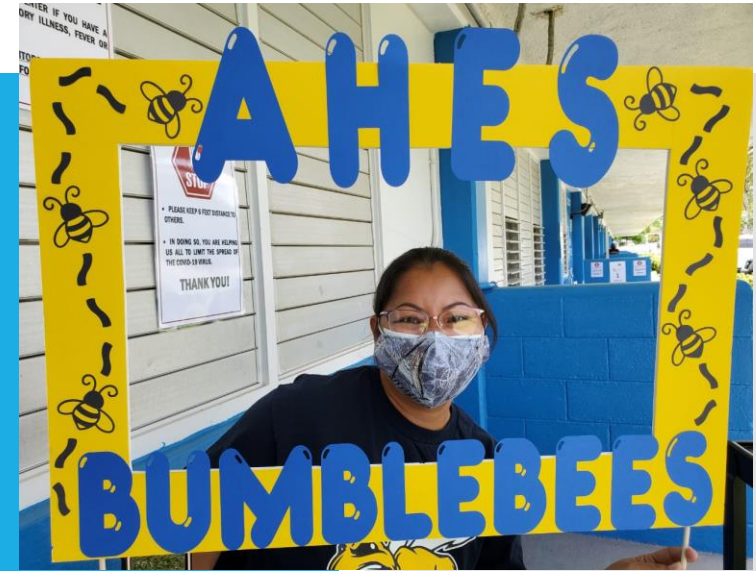


Welcome to  
**AGANA HEIGHTS  
ELEMENTARY  
SCHOOL**  
“Home of the  
Bumblebees”



## **GDOE VISION**

***“Every Student: Responsible, Respectful  
and Ready for Life”***

## **GDOE MISSION**

***Prepares all students for life  
Promotes Excellence  
Provides Support***



# AHES MISSION

Agana Heights Elementary School  
provides quality education to  
develop respectful and responsible  
lifelong learners in a safe  
environment.



# GDOE GRADUATE OUTCOMES

Technologically Literate  
Effective Communicators  
Academically Successful  
Model Citizens



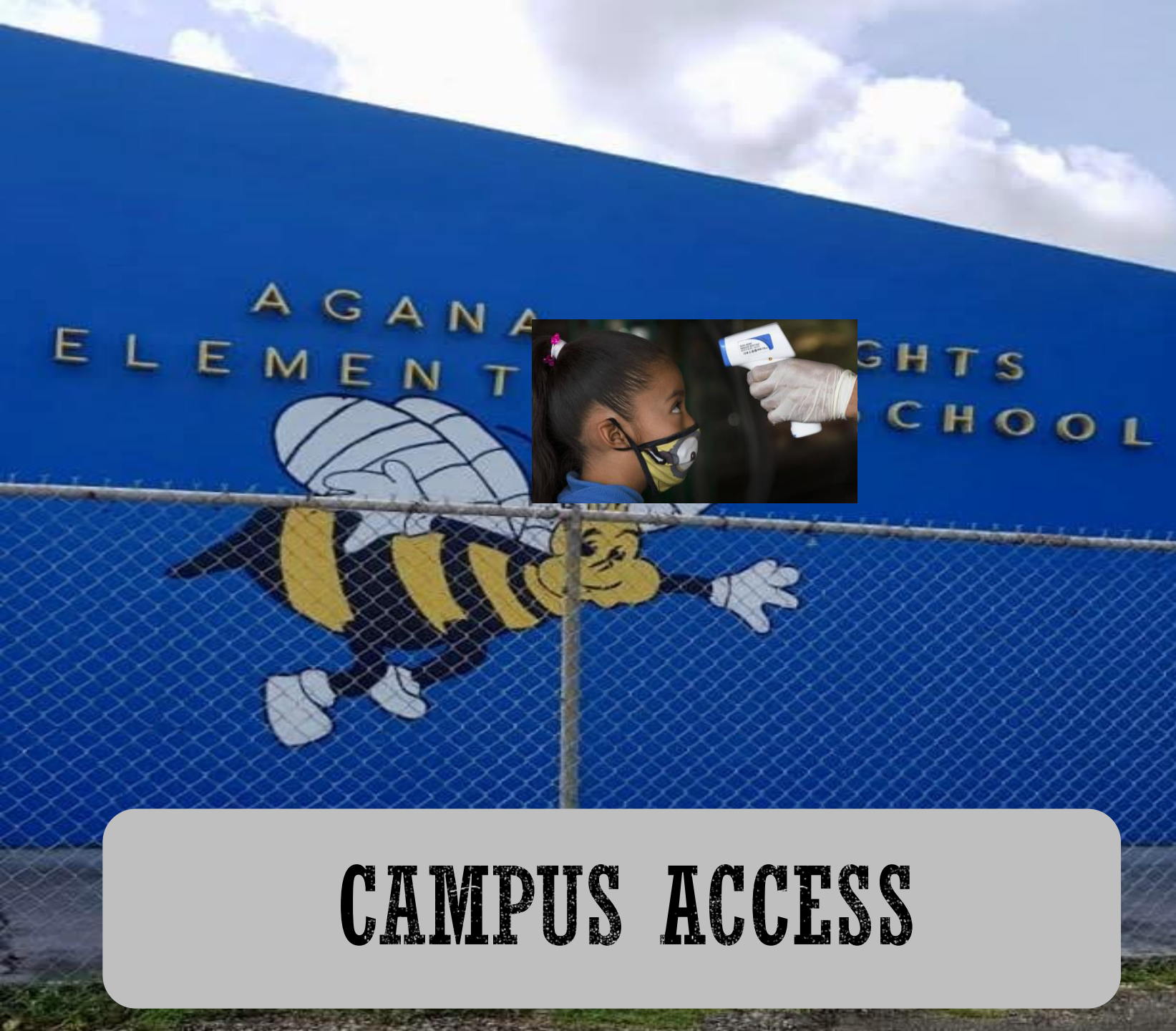
## STUDENT LEARNER OUTCOMES (SLOS)

- ▶ Academically Successful
- ▶ Helpful and Respectful Citizens
- ▶ Effective Communicators
- ▶ Savvy and Responsible Technology Users

## SCHOOLWIDE EXPECTATIONS

- ▶ Be Safe
- ▶ Be Respectful
- ▶ Be Responsible





- ✓ Controlled entry point
- ✓ Temperature & symptoms screening
- ✓ New visitor protocols

**CAMPUS ACCESS**

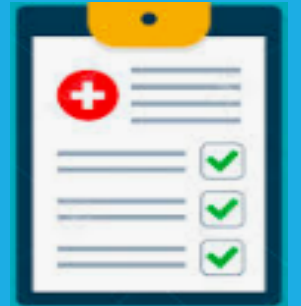
# NEW EXPECTATIONS

Decreased school capacity and  
physical distancing

Temperature check and  
visual symptoms screening

Face masks or cloth coverings

Hygiene and cleaning protocols



# PASSIVE SCREENING

Parents asked to self-screen child before leaving home for COVID-19 symptoms and to ensure temperature below 100.4°F

Please keep child at home if not feeling well or symptoms are consistent with COVID-19

Parents should contact teacher if child is not well

## Exclusion Criteria

Temperature of 100.4 or higher

Cough

Vomiting / Diarrhea

New Rash

Identified by DPHSS (contact tracing)

Off-island travel w/in the last 14 days



Exclude people  
with COVID-19  
symptoms



# ACTIVE SCREENING

- ✓ Students are required to wear a face mask prior to entering school campus and required to undergo thermal temperature check upon entry on school campus
- ✓ Students exhibiting COVID-19 symptoms will not be allowed on campus
- ✓ Students must wash or sanitize hands using 60% or more alcohol content upon entering campus

# **ACTIVE SCREENING — CAR RIDER**

- Students must remain in their vehicle until they reach the designated drop off point for temperature check
- Parent/Guardian will also remain in vehicle
- If student is running a fever parent/guardian will be informed student will not be allowed to attend class until cleared

# **ACTIVE SCREENING — BUS RIDER**

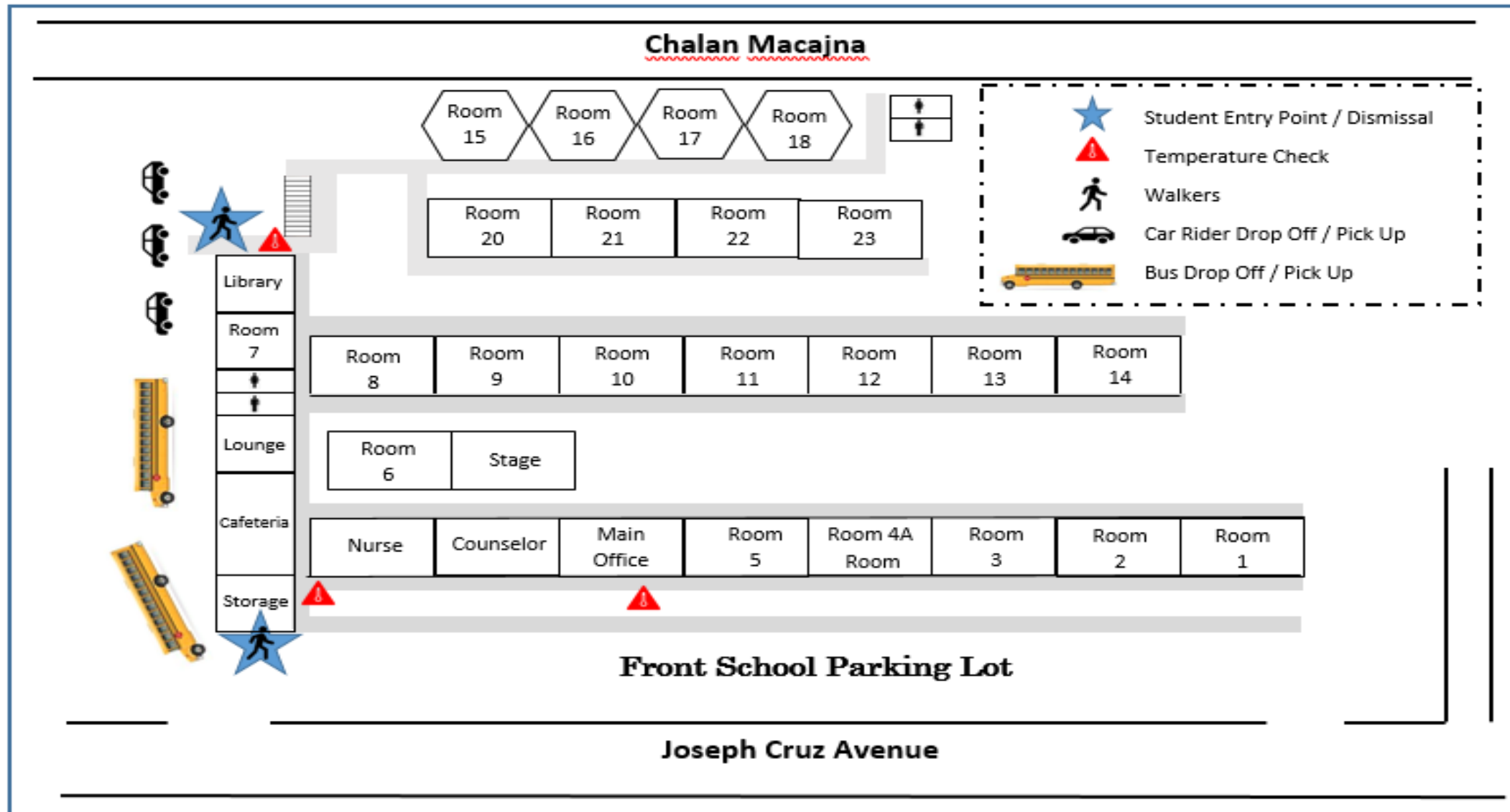
- Bus riders will line up at the front of the cafeteria for daily temperature check
- If student is running a fever, he/she will be immediately separated from others and assessed by school nurse
- If needed, student will be placed in CARE room and supervised until he/she is picked up by authorized adult or health care facility

# ACTIVE SCREENING — WALKERS

- Front gate walkers - will line up at the front of the cafeteria for daily temperature check
- Back gate walkers – will line up under awning
- Parent/Guardian walking with their child will remain outside the gate wearing their face mask
- If student is running a fever parent/guardian will be informed student will not be allowed to attend class until cleared

# TEMPERATURE CHECK & CAMPUS ENTRY

ONE WAY: 7:15 AM - 8:30 AM





# FACE MASK/COVERING

✓ **Approved**



✗ **Not Approved**



**Masks with valve/vent**

# HEALTH & SAFETY PROTOCOLS

- Consistent practice and positive reinforcement by school personnel
- Limit frequently used and shared items (i.e. manipulatives, markers)
- Frequently disinfect instructional devices and common areas (i.e. student desks, restrooms, cafeteria tables)
- Use only products approved by CDC
- Hand sanitizers, alcohol sprays

As common practice, school personnel and students should wash or sanitize hands before entering classrooms, offices, cafeteria, or other rooms/areas on school campus

# PHYSICAL CAMPUS CHANGE



# HALLWAY TRANSITION/DIRECTIONAL FLOW

- Students will practice physical distancing while in hallways
- Students will walk on the right side of the hallway and practice non-contact transitioning by refraining from touching other students while in passing





# CURRICULUM MODELS OF LEARNING



Face to Face Learning



Online Learning



Hard Copy Learning



# Fixed Schedule

Monday & Tuesday:  
Online Learning

Wednesday

Cohort A: Last Name A-L

Thursday

Cohort B: Last Name M-Z

Friday

Hard Copy Distribution  
Friday Intervention

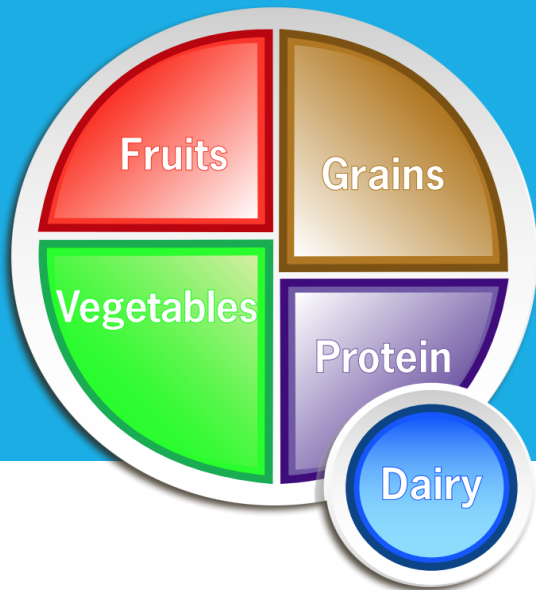
Month/Year:

Sunday	Monday	Tuesday	Wednesday	Thursday	Friday	Saturday
	Online	Online	A	B	HC Friday Intervention	
	Online	Online	A	B	HC Friday Intervention	
	Online	Online	A	B	HC Friday Intervention	

- **Office Operational Hours:** 7:15 a.m. – 3:30 p.m.
- **Online Learning**
  - Monday, January 18<sup>th</sup> – Holiday (No Classes)
  - Tuesday, January 19<sup>th</sup>
- **Face-to-Face Learning**
  - Instructional Day – 8:30 a.m. to 2:43 p.m.
  - Gate opens at 7:15 a.m.
  - Student drop-off: **NO** earlier than 7:15 a.m
  - Gate closes at 8:30 a.m. (tardy students must report to the Main Office for a tardy pass)
  - Dismissal is at 2:43 p.m.
  - Student pick-up by 3:15 p.m.
- **Hard Copy Learning**
  - Learning packet pick-up/drop-off every Friday from 9:00 a.m. to 1:00 p.m.



## Community Eligibility Provision (CEP)



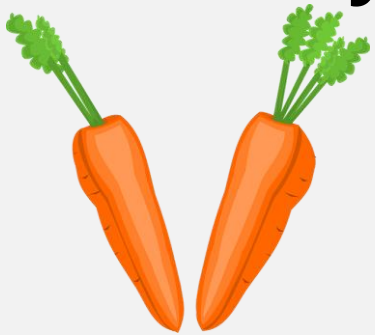
# SCHOOL MEALS

AHES participates in the CEP federal program as part of the national school breakfast and lunch program

All students receive a nutritious breakfast and lunch at not cost, regardless of family income.

# SCHOOL MEAL GUIDELINES & SCHEDULE

**Be Healthy**



**Eat Healthy**

- **Federal Nutrition Guidelines/Local Mandates**
  - Healthy food served at school
  - Fast food meals are discouraged
  - No Class Parties due to Public Health Regulations
  - Breakfast is served from **7:20 a.m. – 8:15 a.m.**
  - **Due to safety and liability, the school cannot heat up food**
- **Lunch Schedule**
  - 11:38 a.m. - 12:23 p.m. – Kindergarten and 1<sup>st</sup> Grade
  - 11:48 a.m. - 12:33 p.m. – 2<sup>nd</sup> and 3<sup>rd</sup> Grade
  - 12:03 p.m.- 12:48 p.m. – 4<sup>th</sup> and 5<sup>th</sup> Grade

**NOT  
REQUIRED  
BUT HIGHLY  
ENCOURAGED**



## **SCHOOL UNIFORM**

- Uniform Top: Dark Blue T-shirt
  - Note: *Light blue polo will **NO longer** be accepted*
- Uniform shirts sold in the Main Office
  - PTO: \$10 a shirt
- Uniform Bottom: Any comfortable bottom



# SCHOOL CURRICULUM

## STANDARDS & SUBJECTS



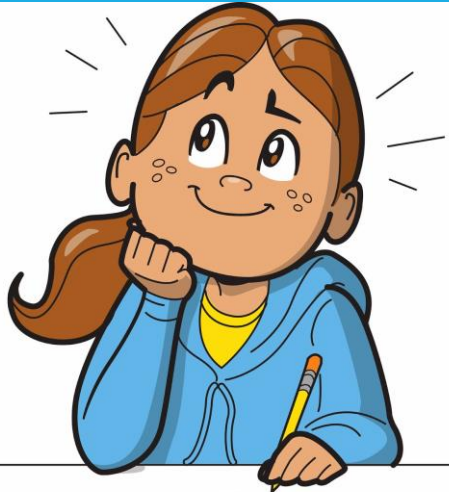
- Core Subjects:
  - Reading
  - Language Arts
  - Math
  - Social Studies
  - Science
  - CHamoru
- PE, Health, Art, Music, and Computer – blended with core subjects, but will not be issued grades this SY
- Common Core State Standards – Focus is in Reading, Language Arts, and Math
- Next Generation Science Standards (NGSS) - Science
- Guam/National Standards are used for other subjects

# INSTRUCTIONAL STRATEGIES/ TRAININGS



- Curriculum Instruction That Works (CITW)
- Sheltered Instruction Observation Protocol (SIOP)
- Success for All (SFA)
- Singapore Math
- STEM
- FOSS
- Literacy Strategies
- Early Childhood
- Social Emotional

# ASSESSMENTS



- AimsWeb: Math, Reading, and LA
- District-Wide Assessment (DWA)
- Standards-Based Assessment (SBA)
- ACTAspire
- Common Formative Assessments (CFA)  
– track how students are progressing toward a standard/skill in the lesson



# GDOE STATE STRATEGIC PLAN/ AHES PLAN



- Common Core State Standards (CCSS) and DOE Standards
  - District-wide Non-negotiable standards/skills/topics
- Standards Based/Referenced Grading (SBG) – Mastery of standard/skill
  - Proficiency Scales (PS) 4 – 3 – 2 – 1
  - Rubrics that define if child met proficiency/mastery of standard/skill
- Common Formative Assessments (CFAs)
  - Frequent, classroom level assessments to gauge student proficiency/mastery of standard
  - Interventions for some? / Re-teach for all? / Move to next standard?

# POSITIVE BEHAVIOR INTERVENTION SUPPORT

## SCHOOLWIDE EXPECTATIONS

- ▶ Be Safe
- ▶ Be Respectful
- ▶ Be Responsible

# PBIS



- The primary objective of school discipline is to maintain a safe and orderly environment that positively affects academic achievement.
- These PBIS behavior expectations are taught to all our students at the beginning of the school year and reinforced throughout the year.
- Honey Tickets to choose prizes from the Beehive Cart!
- Bumblebee Student of the Month – PBIS criteria, selected by the teacher
- Buzzing Bee Monthly Raffle – by grade level , no minor or major referrals



## **TITLE 17 GCA DUTY TO SEND CHILDREN TO SCHOOL**

Any parent, guardian or other person having control or charge of any child who is at least five (5) years of age to eighteen (18) years, not exempted under provision of this Article, shall send the child to a public or private full-time day school for the full-time of which such schools are in session. Any person who fails to comply with these provisions is guilty of violation for the first offense and subject to a perform (100) hours of community service at the school of the student.

# EXCUSE NOTE & PRE-ARRANGED ABSENCE

- It is the parent's responsibility to inform the school and submit an excuse note to your child's teacher upon return
- Absences of three (3) consecutive days or more require a doctor's excuse with a "reporting back to school" date.



- Pre-Arranged Absence/Off-Island Travel
  - 2 week submission of request

Daily Attendance

Tardy

Habitual  
Absences/Tardies



- We encourage regular and prompt attendance from students.
- Be at school daily and ready to learn by 8:15 am
- Students must be **in their classroom before 8:30am** to avoid being tardy.
- Students must obtain a tardy pass from the Main Office from 8:30am and after
  - **Habitual Absences/Tardies** – Meeting with Principal, Social Worker , or School Attendance Officer
- Please **communicate** with the school if you need assistance

# STUDENT ATTENDANCE

## ATTENDANCE POLICY

**3<sup>rd</sup> Unexcused Absence**

- Teacher calls home/send note home/communicates through homework notebook.

**6<sup>th</sup> Unexcused Absence**

- Referral to the Administrator
- Parent Meeting

**9<sup>th</sup> Unexcused Absence**

- Parent meeting with Truant Officer will be scheduled

**12<sup>th</sup> Unexcused Absence**

- Referral to the Truant Officer for court
- Referral to CPS for Parent Neglect

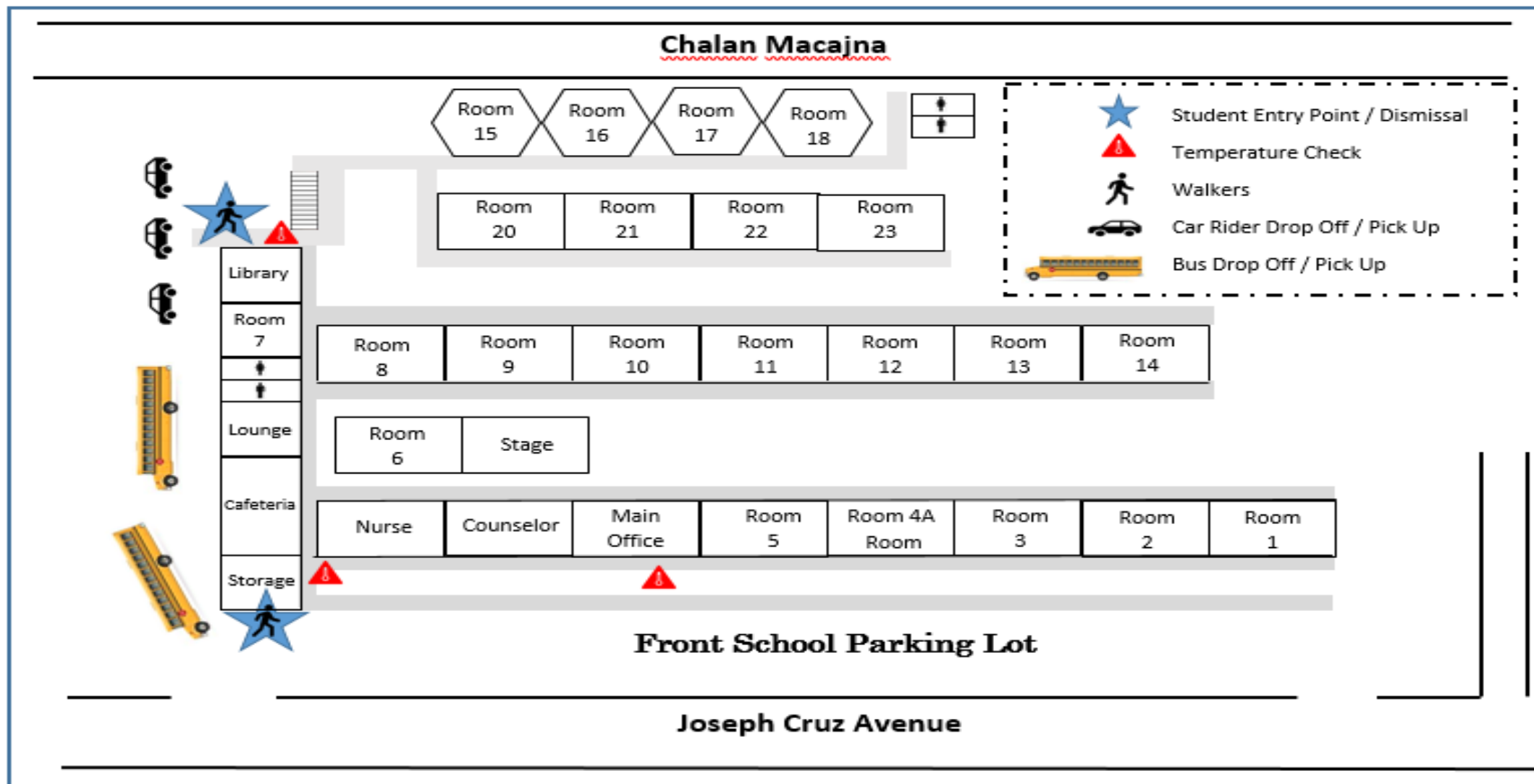
# Dismissal / Pick-Up Areas



- **All Car Riders**: Will use the side gate near the Mayor's Office/Basketball Court for Pick-Up
  - Parents/Guardians **MUST** wait **OUTSIDE** the gate
- **Bus Riders**: Front gate of the school
- **Walkers** (2 exits for walkers)
  - Back of the school (Chalan Macajna/Basketball Court)
  - Front of the school (Joseph Cruz Avenue)
- Homeroom teachers will be compiling a list for mode of transportation to and from school
- Please inform your child's teacher upon your child's return to school
  - **Any changes** during the SY, please inform **BOTH** the Teacher and Main Office

# STUDENT DISMISSAL - ONE WAY

2:30 PM - 3:15 PM

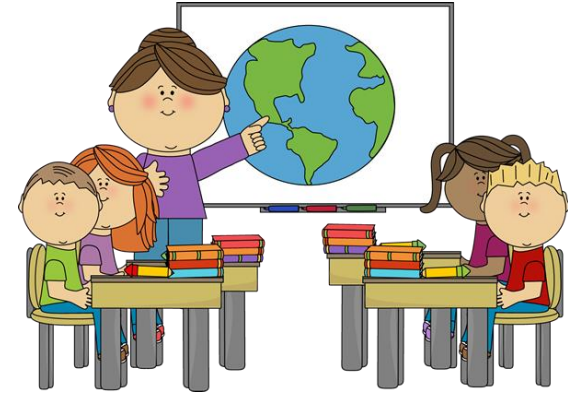




# AHES Faculty

- **Kindergarten**

- Rm. 17 –
  - Ms. Patrice Tenorio
- Rm. 18 –
  - Ms. JoAnn Brown
- Rm. 19 –
  - Ms. Mary Tenorio



- **First Grade**

- Rm. 15 –
  - Ms. Ignacia Gumataotao
- Rm. 16 –
  - Mrs. Brogan Sanchez
- Rm. 20 –
  - Ms. Janae Leon Guerrero

# AHES Faculty



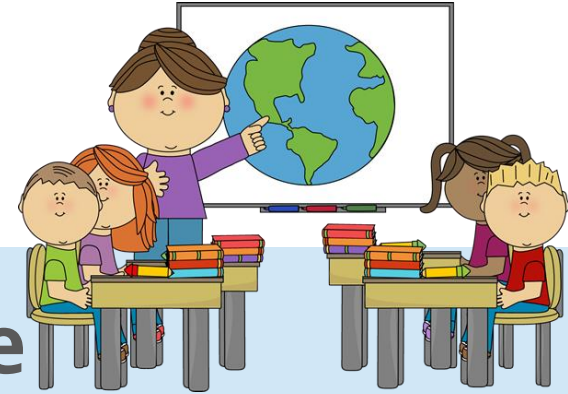
## Second Grade

- Rm. 21 –
  - Ms. Aisabel Naz
- Rm. 22 –
  - Mrs. Darlene Rivera
- Rm. 23 –
  - Ms. Claire Sablan

## Third Grade

- Rm. 9 –
  - Dr. Angella Lujan
- Rm. 10 –
  - Mrs. Carol Somerfleck
- Rm. 11 –
  - Mrs. Welma Quinata

# AHES Faculty



- **Fourth Grade**

- Rm. 2 –
  - Ms. Collins
- Rm. 3 -
  - Mrs. Selina Castro
- Rm. 5 –
  - Mrs. Barbara Lorenzo

- **Fifth Grade**

- Rm. 1 –
  - Mrs. Millie Afaisen
- Rm. 12 –
  - Ms. Meagan Terlaje
- Rm. 13 –
  - Ms. Shannel Leon Guerrero

# AHES Faculty and Staff

Chamorro (Room 6 and 8)

- Senora Jeannie Calvo
- Senorita Alvina King
- Senora Atalig

SPED - Mr. Joselito Acfalle (Rm. 6)

ESL – Mrs. Dolores Cayanan (Rm. 4B)

- GATE (Rm. 14)– Mrs. Stephanie Taitano
- Librarian – Mrs. Neldie Pendon-Limtiaco
- Instructional Coach – Mr. Rick Quinata
- Nurse – Mrs. Eden Laserna
- Counselor – VACANT

# AHES PTO SY2020-2021

- President – Rhonda Rekdahl
- Vice President – Liz Calvo
- Secretary – Doris Calvo
- Treasurer – Nikki Cruz
- Past-President – Ed Lamb



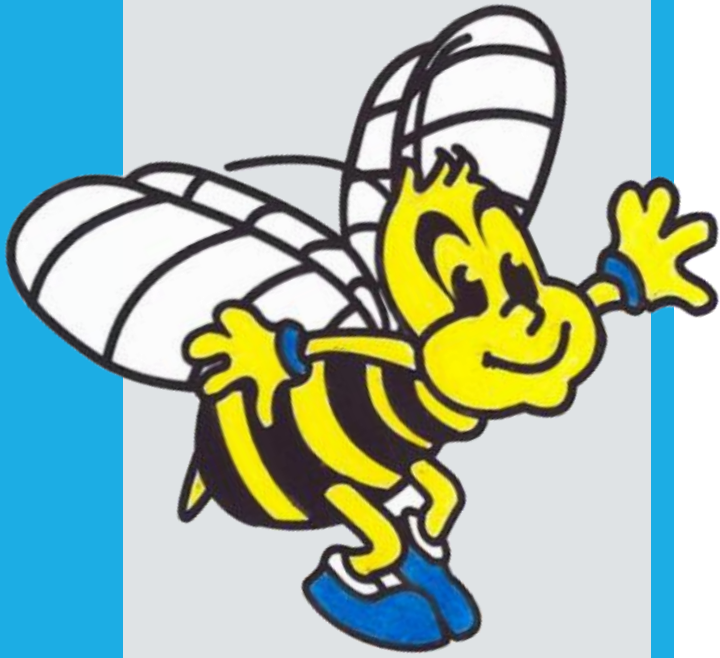
- Parent Representatives
  - Vince Duenas
  - Marie Pereda
- Teacher Representatives
  - Ignacia Gumataotao
  - Mary Tenorio

# AHES SAFETY VIDEO



Hafa Adai! Welcome to Agana Heights Elementary School,  
Home of The Bumblebees.





- Office Numbers: 477-8040, 8060 or 477-8340
- [www.aganaheightselementaryschool.weebly.com](http://www.aganaheightselementaryschool.weebly.com)
- [ahesbumblebees@gdoe.net](mailto:ahesbumblebees@gdoe.net) – school email
- *Swift K12* – school electronic announcement via email, voice and/or text messages;
  - ensure contact information is up to date and choose preference for delivery of message



**QUESTIONS**