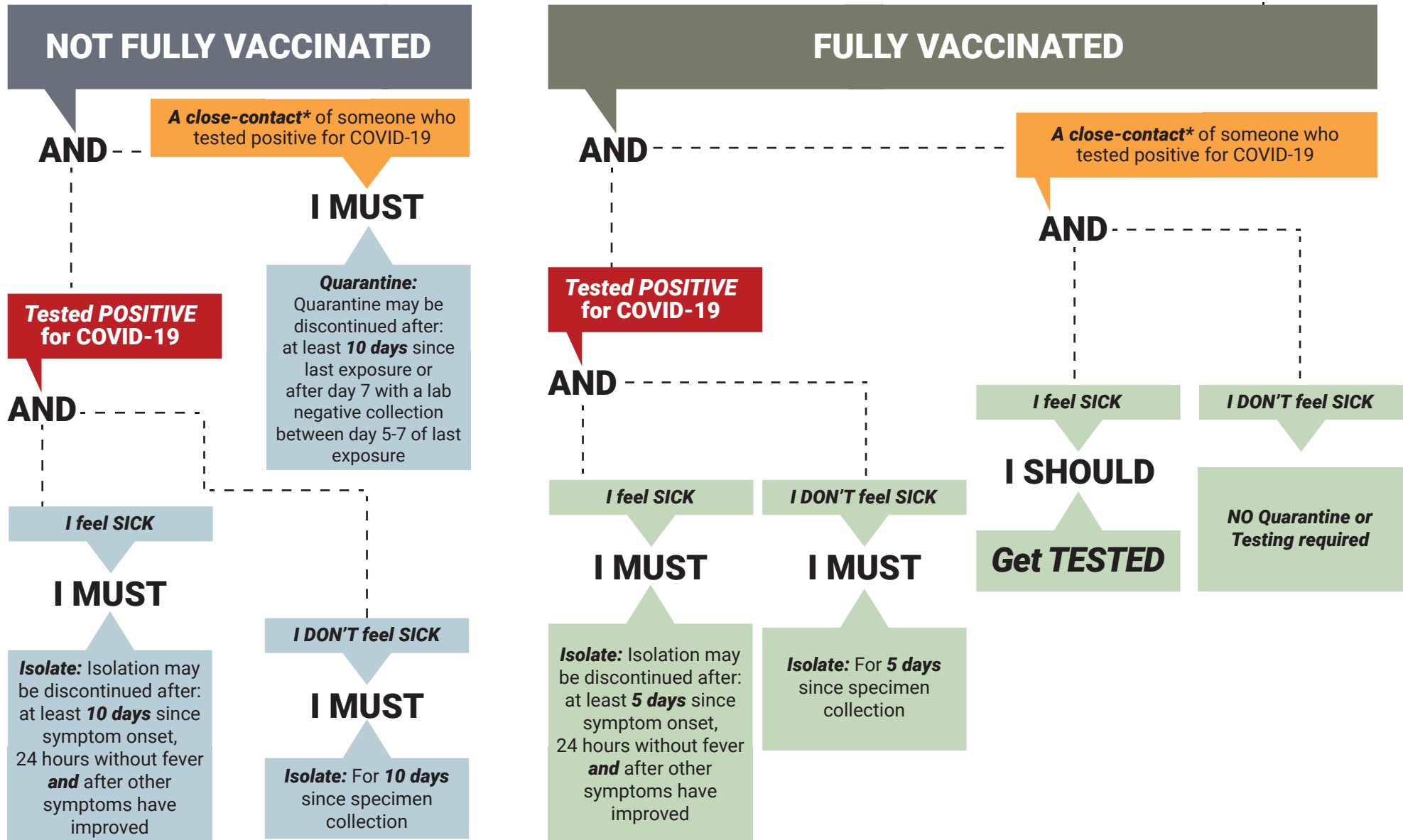


# I AM



## Isolation and Quarantine – issued January 31, 2022

Based on Executive Order 2021-32 and DPHSS Guidance Memo 2021-16 Rev. 1.

For official guidance, CLICK HERE: [https://dphss.guam.gov/wp-content/uploads/2022/01/DPHSS-GUIDANCE-MEMO-2021-16-REV02-01-28-2022\\_FINAL.pdf](https://dphss.guam.gov/wp-content/uploads/2022/01/DPHSS-GUIDANCE-MEMO-2021-16-REV02-01-28-2022_FINAL.pdf)

\*Close contacts are someone who was less than 6 feet away from an infected person (laboratory-confirmed or a clinical diagnosis) for a cumulative total of 15 minutes or more over a 24-hour period. For example, three individual 5-minute exposures for a total of 15 minutes.

(Source: [cdc.gov/coronavirus/2019-ncov/your-health/quarantine-isolation.html](https://www.cdc.gov/coronavirus/2019-ncov/your-health/quarantine-isolation.html))

