



# BEEHIVE BUZZ

FEBRUARY 2022

ISSUE NO. 6

Monthly Newsletter



## GDOE Vision

Every Student:  
Responsible, Respectful,  
and Ready for Life

## GDOE Mission

Our educational community  
prepares all students for  
life, promotes excellence,  
and provides support.

## AHES Mission

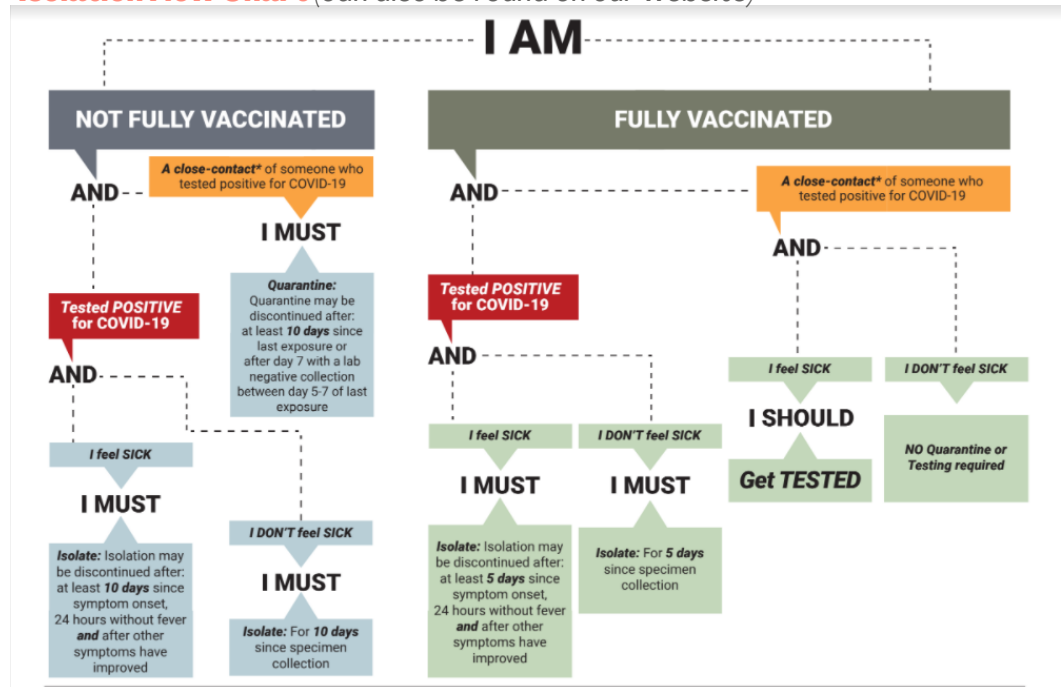
Agana Heights Elementary  
School provides quality  
education to develop  
respectful and responsible  
lifelong learners in a safe  
environment.

## AHES SLOs

- Academically Successful Learners
- Helpful and Respectful Citizens
- Effective Communicators
- Savvy and Responsible Technology Users

## ANNOUNCEMENTS

- We had a great turn out for **Parent Teacher Conference** on January 21st! Thank you parents for taking time out from your busy schedule to discuss your child's academic progress with their teacher.
- Isolation Flow Chart** (can also be found on our website)



### Isolation and Quarantine – issued January 31, 2022

Based on Executive Order 2021-32 and DPHSS Guidance Memo 2021-16 Rev. 1.  
For official guidance, CLICK HERE: [https://dphss.guam.gov/wp-content/uploads/2022/01/DPHSS-GUIDANCE-MEMO-2021-16-REV02-01-28-2022\\_FINAL.pdf](https://dphss.guam.gov/wp-content/uploads/2022/01/DPHSS-GUIDANCE-MEMO-2021-16-REV02-01-28-2022_FINAL.pdf)

\*Close contacts are someone who was less than 6 feet away from an infected person (laboratory-confirmed or a clinical diagnosis) for a cumulative total of 15 minutes or more over a 24-hour period. For example, three individual 5-minute exposures for a total of 15 minutes.  
(Source: [cdc.gov/coronavirus/2019-ncov/your-health/quarantine-isolation.html](https://www.cdc.gov/coronavirus/2019-ncov/your-health/quarantine-isolation.html))



### AHES Office Assistance

477-8040/8340

ahesbumblebees@gdoe.net

### School Website

<http://aganaheightselementaryschool.weebly.com/>

### New School Website- will be available soon

<https://sites.google.com/gdoe.net/ahes>

### GDOE Stakeholder Inquiries

<https://www.gdoe.net/>

info@gdoe.net

- PBIS** (Positive Behavior Interventions & Supports) Update
  - We have started our Honey Ticket distribution. Students get to pick a prize from The Bee Hive Store when they receive 10 Honey Tickets. Please encourage your child/ren to follow the schoolwide expectations (Be Respectful, Be Responsible, Be Safe).
- Please see the attached documents:
  - Student Recognition & Awards Criteria**
  - Email listing for the Faculty** in case you need to email them with your questions or concerns.





# February 2022

| Sunday | Monday  | Tuesday | Wednesday | Thursday  | Friday   | Saturday |
|--------|---|---------|-----------|---|--|----------|
|        |   | 1       | 2         | 3   | 4  | 5        |
| 6      | 7   | 8       | 9         | 10<br>PTO Meeting @<br>5:30PM via Zoom                                    | 11<br>Super Bowl<br>on Monday!<br>Wear your favorite<br>sports team jersey or<br>colors. | 12       |
| 13     | 14<br>Classes in Session<br><i>HAPPY Valentine's Day</i><br>Wear RED or PINK. | 15      | 16        | 17<br>Random Acts of<br>Kindness Day—Do<br>something KIND for<br>someone. | 18   | 19       |
| 20     | 21<br>Classes in Session<br>Wear RED,<br>WHITE BLUE,<br>STARS, or<br>STRIPES. | 22      | 23        | 24  | 25   | 26       |
| 27     | 28  |         |           |   |  |          |



*\*Mini Class Assemblies will take place this month for our Academic, Citizenship, and Bumblebee Ambassador Recognition and Awards. Pictures will be available on our website.*